

## Need help from Arlo?

---

We are here for you.

Visit [www.arlo.com/support](http://www.arlo.com/support) for quick answers and resources:

- How-to videos
- Troubleshooting tips
- Additional support resources

### Mobile service

For help with your Go 2 mobile service plan, contact the wireless carrier who provided the SIM card. If no SIM card was included, visit your wireless carrier to activate a service plan and receive a SIM card.



## Go 2 LTE/WiFi Security Camera

---



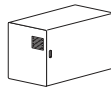
Go 2 LTE/WiFi  
Security Camera



Screw  
Mount



Screw  
Kit



Rechargeable  
Battery

**Note:** To access the wireless carrier's network, your Go 2 Camera requires an activated SIM card.



Indoor charging cable

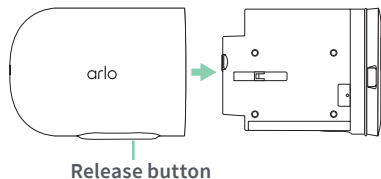
August 2022



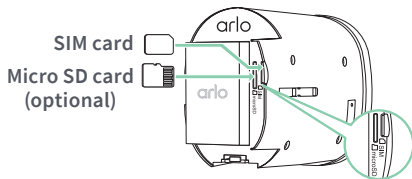
201-50642-30

## Installation

1. Press the release button and separate the camera from the camera housing.



2. Insert the battery.



3. For LTE access, verify that the SIM card is installed and activated.
4. Insert the camera back into the housing.

## Set up your Go 2 Camera

1. Download the Arlo Secure App and follow the setup instructions for your camera.



2. We recommend charging the battery indoors before mounting your camera.

© Arlo Technologies, Inc. Arlo, Arlo logo, and Every Angle Covered are trademarks of Arlo Technologies, Inc. App Store is a service mark of Apple Inc. Google Play and the Google Play logo are trademarks of Google LLC. Any other trademarks are for reference purposes.

Si ce produit est vendu au Canada, vous pouvez accéder à ce document en français canadien à [arlo.com/docs](http://arlo.com/docs).

(If this product is sold in Canada, you can access this document in Canadian French at [arlo.com/docs](http://arlo.com/docs).)

For regulatory compliance information including the EU Declaration of Conformity, visit [www.arlo.com/about/regulatory/](http://www.arlo.com/about/regulatory/).

Arlo Technologies, Inc.  
2200 Faraday Avenue, Suite 150  
Carlsbad, CA 92008 USA



Arlo Technologies UK Limited  
100 New Bridge Street  
London, EC4V 6JA

Arlo Technologies Intl. Ltd  
Ground Floor, Building 3  
University Technology Centre  
Curraheen Road, Cork T12 EF21 Ireland